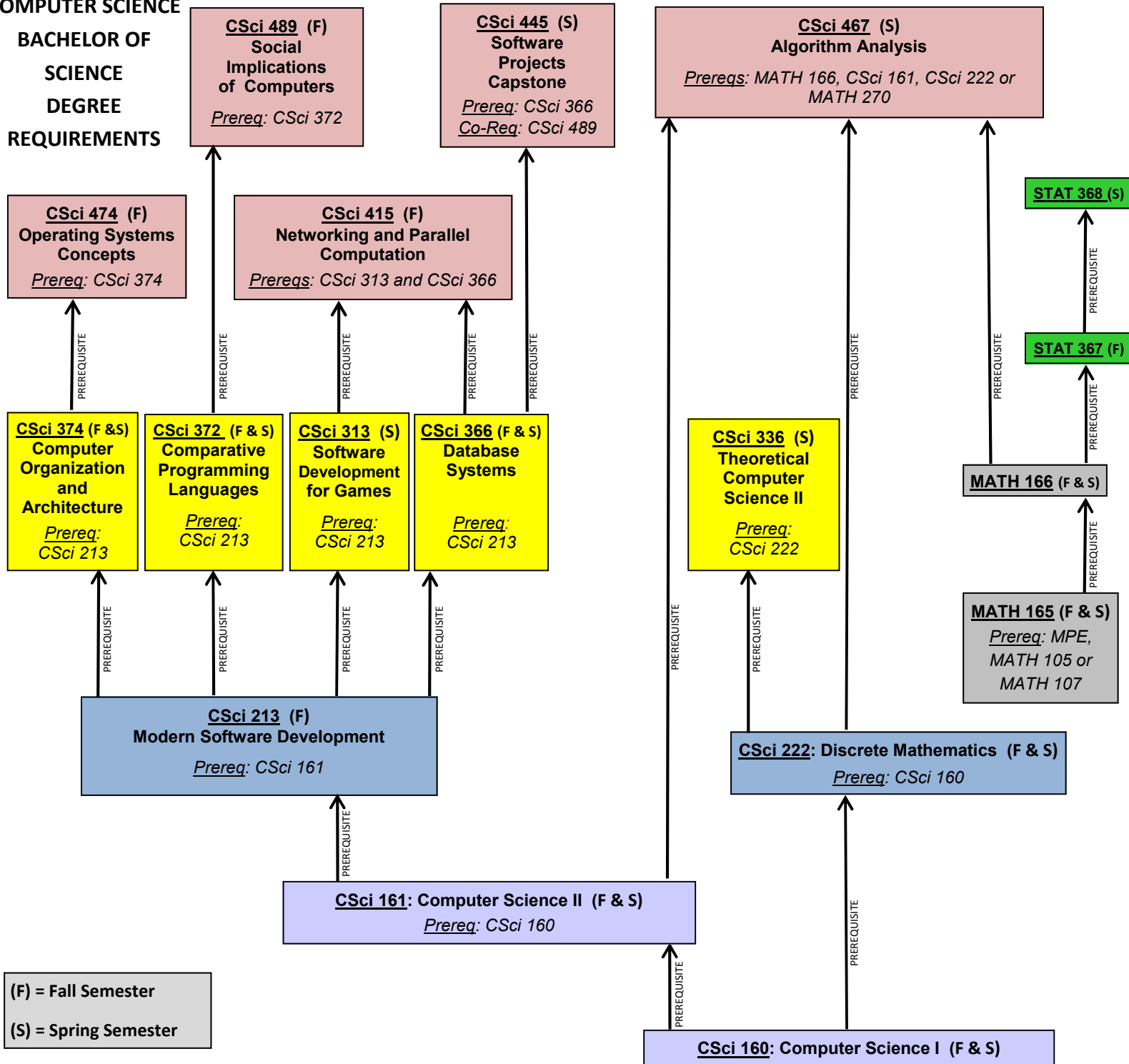


**COMPUTER SCIENCE  
BACHELOR OF  
SCIENCE  
DEGREE  
REQUIREMENTS**



(F) = Fall Semester  
(S) = Spring Semester

**COMPUTER SCIENCE  
ELECTIVES**

**- SOFTWARE ENGINEERING -**

- CSci 413:** Introduction to Software Engineering (Prereq: CSci 161)
- CSci 477:** Object-Oriented Systems (Prereq: CSci 372)
- CSci 488:** Human-Computer Interaction (Prereq: CSci 372)

**- LARGE SYSTEMS -**

- CSci 426:** Introduction to Artificial Intelligence (Prereq: CSci 372)
- CSci 458:** Microcomputer Graphics (Prereq: CSci 372, Math 146 or Math 165)
- CSci 459:** Foundations of Networks

**- SYSTEMS MODELING -**

- CSci 418:** Simulation Models (Prereq: Stat 367)
- CSci 453:** Linear Programming and Network Flows (Prereq: Math 265)
- CSci 454:** Operations Research (Prereq: CSci 453, Stat 367)

**- EMERGING AREAS -**

- CSci 345:** Topics in Personal Computers (Prereq: CSci 161)
- CSci 428:** Computational Techniques for Environmental Sustainability (Prereq: CSci 161)
- CSci 469:** Network Security (Prereq: CSci 222, CSci 459, C/C++ or JAVA)
- CSci 473:** Foundations of Digital Enterprise (Prereq: CSci 372)
- CSci 476:** Computer Forensics (Prereq: CSci 474 or instructor approval)
- CSci 479:** Introduction to Data Mining (Prereq: Basic database course - e.g. CSci 366 or CSci 468)